

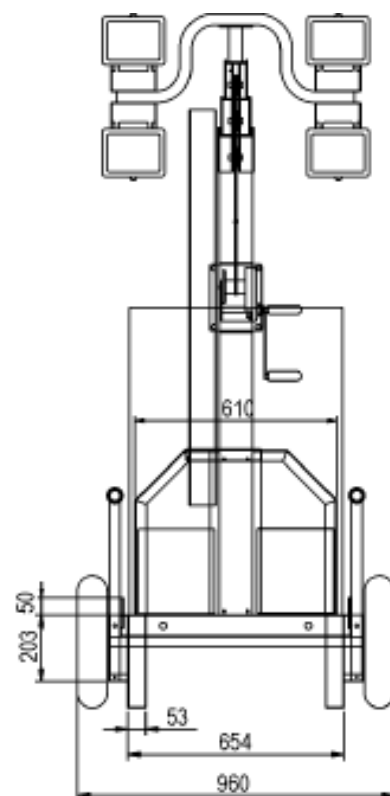
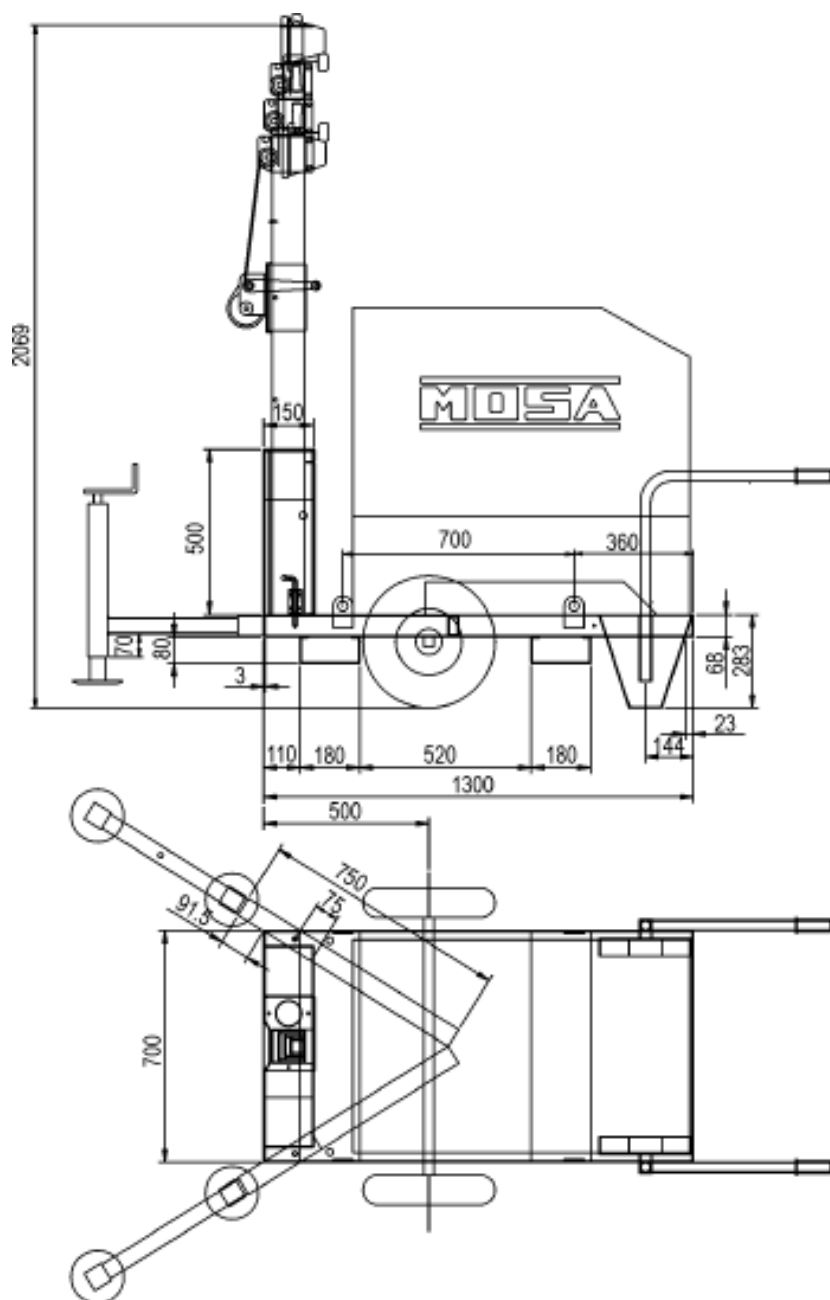
**PRODUCT INFORMATION****MANUAL LIGHTING TOWER 5.5 m TYPE TFMM5.5**

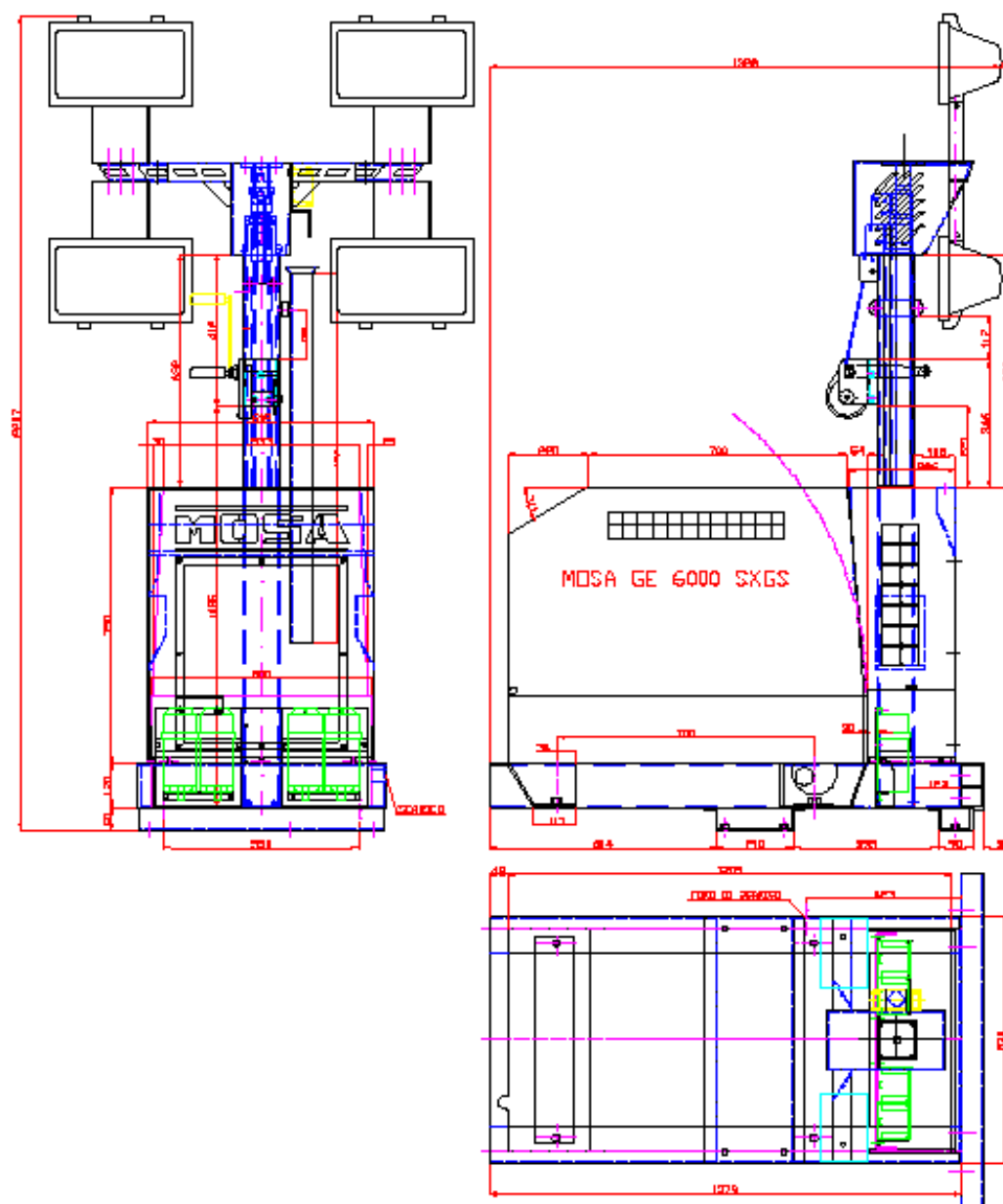
**integrated with a Mosa GE 6000 SX/GS-EAS and with  
4x400W METAL HALIDE LAMPS**

- **Five and a half (5.5) meters maximum height**
  - Telescopic steel mast with 4 sections, galvanized with 20 micron of material guaranteed for life in outdoor applications
  - Manual raising/lowering of the tower with a manual winch and a system of stainless steel ropes.
- **1800m<sup>2</sup> of illuminated area**
  - 4 metal halide lamps 400W each
  - Electrical coiled cable for the ignition of the lamps
  - Bulbs included in the floodlights
- **2 rugged stabilizers adjustable in height**
- **Certified resistance at a maximum wind speed of 80 Km/h**
- **Manual winch with automatic brake maximum load capacity 350 kg**
- **Structure**
  - Extremely compact; usable by a single operator.
  - Special pockets to permit an easy action with a forklift
  - Hard wearing powder coated paint finish
- **Integrated with a generator Mosa GE 6000 SX/GS-EAS with 6 kVA 1-phase power.**
- **Mounted on a chassis prepared for a road or site trailer**
- **Documentation**
  - Owner's manual
  - CE conformity declaration

**MOSA**







REV.	DISEGNATO	DATA	DESCRIZIONE	VERIFICATO
Disegnato da:	Disegno N°	9276	Materiali	Peso Kg.
Verificato da:	Cliente		Modello	Paese
Verificato da:	Descrizione		KIT MOSA GE6000	Quantità
Data	LAY-OUT			Indice revisione
			<p>Stendere accuratamente e smussare gli spigoli vivi          La tolleranza sulla quota lavorata è <math>\pm 0,5</math> mm          Spigoli con quotati Sm = 1x45 oppure R=1 mm          Le ditte tubate i propri disegni a norma di legge</p>	